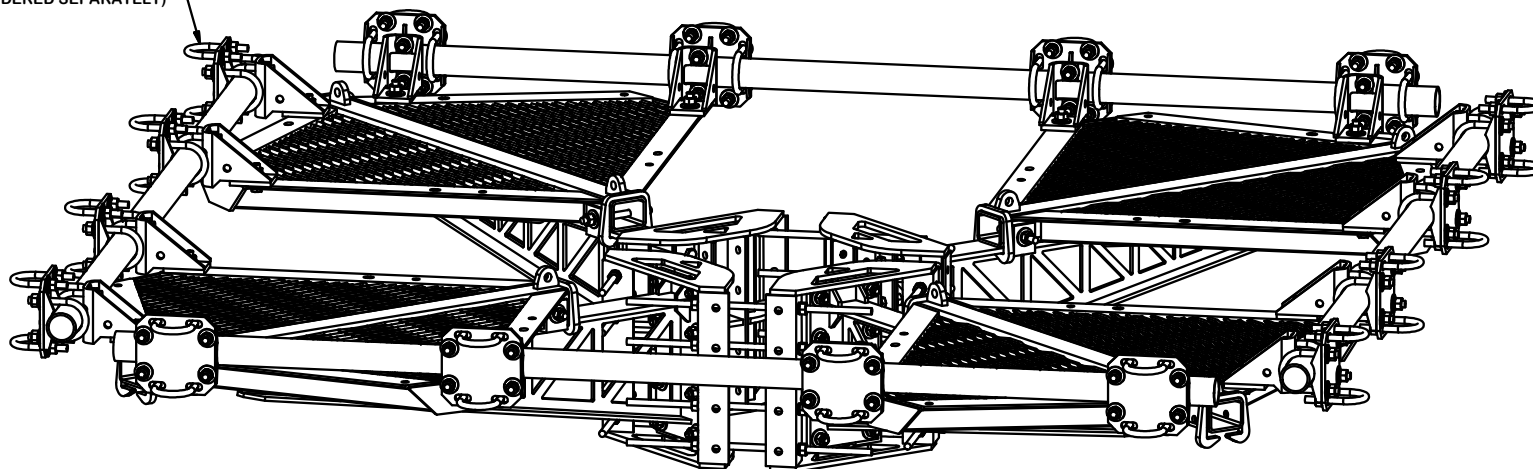


PARTS LIST					
ITEM	QTY	PART NO.	PART DESCRIPTION	LENGTH	UNIT WT. NET WT.
1	4	X-LPP-CW	LOW PROFILE PLATFORM CORNER WELDMENT		198.75 795.01
2	4	X-LPP-SA10	TRUSS ARM WELDMENT FOR 8' AND 10' LOW PROFILE PLATFORMS		99.32 397.29
3	4	X-RM4HD	WELDMENT FOR 4-SIDED HEAVY DUTY RING MOUNT		71.27 285.08
4	16	X-LPP-PC	FACE PIPE CONNECTION BRACKET FORTRESS PLATFORM		7.01 112.15
5	16	X-SCX3-FR	FORTRESS CROSSOVER PLATE		6.61 105.82
6	16	X-LPP-A7	CORNER WELDMENT ATTACHMENT ANGLE	2 1/2 in	1.27 20.33
7	4	P30108	2-7/8" O.D. X 102" SCH. 40 PIPE	108 in	52.32 209.27
8	16	G58R-48	5/8" x 48" THREADED ROD (HDG.)	48 in	0.40 6.38
8	16	G58R-24	5/8" x 24" THREADED ROD (HDG.)	24 in	0.40 6.38
9	8	G58R-8	5/8" x 8" THREADED ROD (HDG.)		0.70 5.58
10	64	X-UB5300	5/8" X 3" X 5-1/4" X 2-1/2" U-BOLT (HDG.)		1.15 73.56
11	32	X-UB5258	5/8" X 2-5/8" X 4-1/2" X 2" U-BOLT (HDG.)		1.00 32.00
12	16	X-UB5304	5/8" X 3" X 4-1/4" X 2-1/2" U-BOLT (HDG.)		0.98 15.60
13	48	G58214	5/8" x 2-1/4" HDG HEX BOLT GR5		0.29 13.99
14	224	G58FW	5/8" HDG USS FLATWASHER	1/8 in	0.07 15.78
15	256	G58LW	5/8" HDG LOCKWASHER		0.03 6.68
16	256	G58NUT	5/8" HDG HEAVY 2H HEX NUT		0.13 33.25
				TOTAL WT. #	2221.77

2-3/8" TO 2-7/8"
ANTENNA MOUNTING PIPES
(ORDERED SEPARATELY)



TOLERANCE NOTES

TOLERANCES ON DIMENSIONS, UNLESS OTHERWISE NOTED ARE:
 SAWED, SHEARED AND GAS CUT EDGES ($\pm 0.030"$)
 DRILLED AND GAS CUT HOLES ($\pm 0.030"$) - NO CONING OF HOLES
 LASER CUT EDGES AND HOLES ($\pm 0.010"$) - NO CONING OF HOLES
 BENDS ARE $\pm 1/2$ DEGREE
 ALL OTHER MACHINING ($\pm 0.030"$)
 ALL OTHER ASSEMBLY ($\pm 0.060"$)

PROPRIETARY NOTE:
 THE DATA AND TECHNIQUES CONTAINED IN THIS DRAWING ARE PROPRIETARY INFORMATION OF VALMONT INDUSTRIES AND CONSIDERED A TRADE SECRET. ANY USE OR DISCLOSURE WITHOUT THE CONSENT OF VALMONT INDUSTRIES IS STRICTLY PROHIBITED.

DESCRIPTION

8' FORTRESS™
QUAD-PLATFORM MOUNT

CPD NO.	DRAWN BY	ENG. APPROVAL
	CEK 8/10/2017	
CLASS	SUB	DRAWING USAGE
81	02	CUSTOMER
	CHECKED BY	
	BMC 8/30/2017	

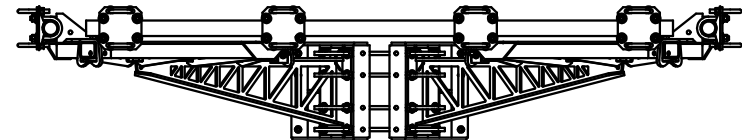
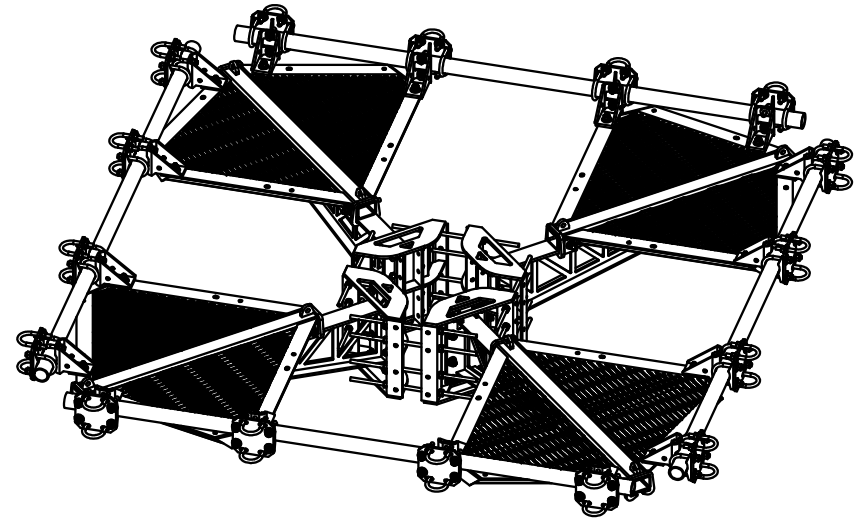
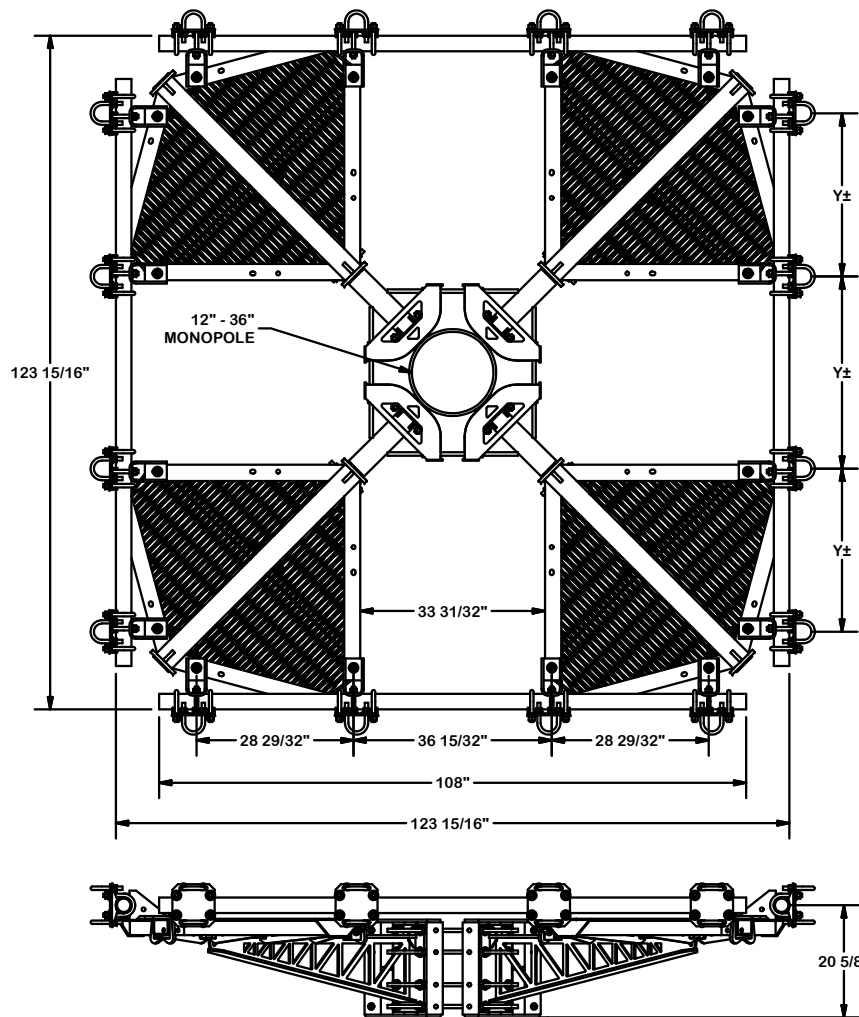


A valmont COMPANY

Engineering
Support Team:
1-888-753-7446

Locations:
New York, NY
Atlanta, GA
Los Angeles, CA
Plymouth, IN
Salem, OR
Dallas, TX

PART NO.	F4P-8	PAGE
DWG. NO.	F4P-8	1 OF 4



TOLERANCE NOTES

TOLERANCES ON DIMENSIONS, UNLESS OTHERWISE NOTED ARE:
 SAWED, SHEARED AND GAS CUT EDGES ($\pm 0.030"$)
 DRILLED AND GAS CUT HOLES ($\pm 0.030"$) - NO CONING OF HOLES
 LASER CUT EDGES AND HOLES ($\pm 0.010"$) - NO CONING OF HOLES
 BENDS ARE $\pm 1/2$ DEGREE
 ALL OTHER MACHINING ($\pm 0.030"$)
 ALL OTHER ASSEMBLY ($\pm 0.060"$)

PROPRIETARY NOTE:
 THE DATA AND TECHNIQUES CONTAINED IN THIS DRAWING ARE PROPRIETARY INFORMATION OF VALMONT INDUSTRIES AND CONSIDERED A TRADE SECRET. ANY USE OR DISCLOSURE WITHOUT THE CONSENT OF VALMONT INDUSTRIES IS STRICTLY PROHIBITED.

DESCRIPTION

8' FORTRESS™
 QUAD-PLATFORM MOUNT

CPD NO.	DRAWN BY	ENG. APPROVAL
81	CEK 8/10/2017	
SUB	DRAWING USAGE	CHECKED BY
02	CUSTOMER	BMC 8/30/2017

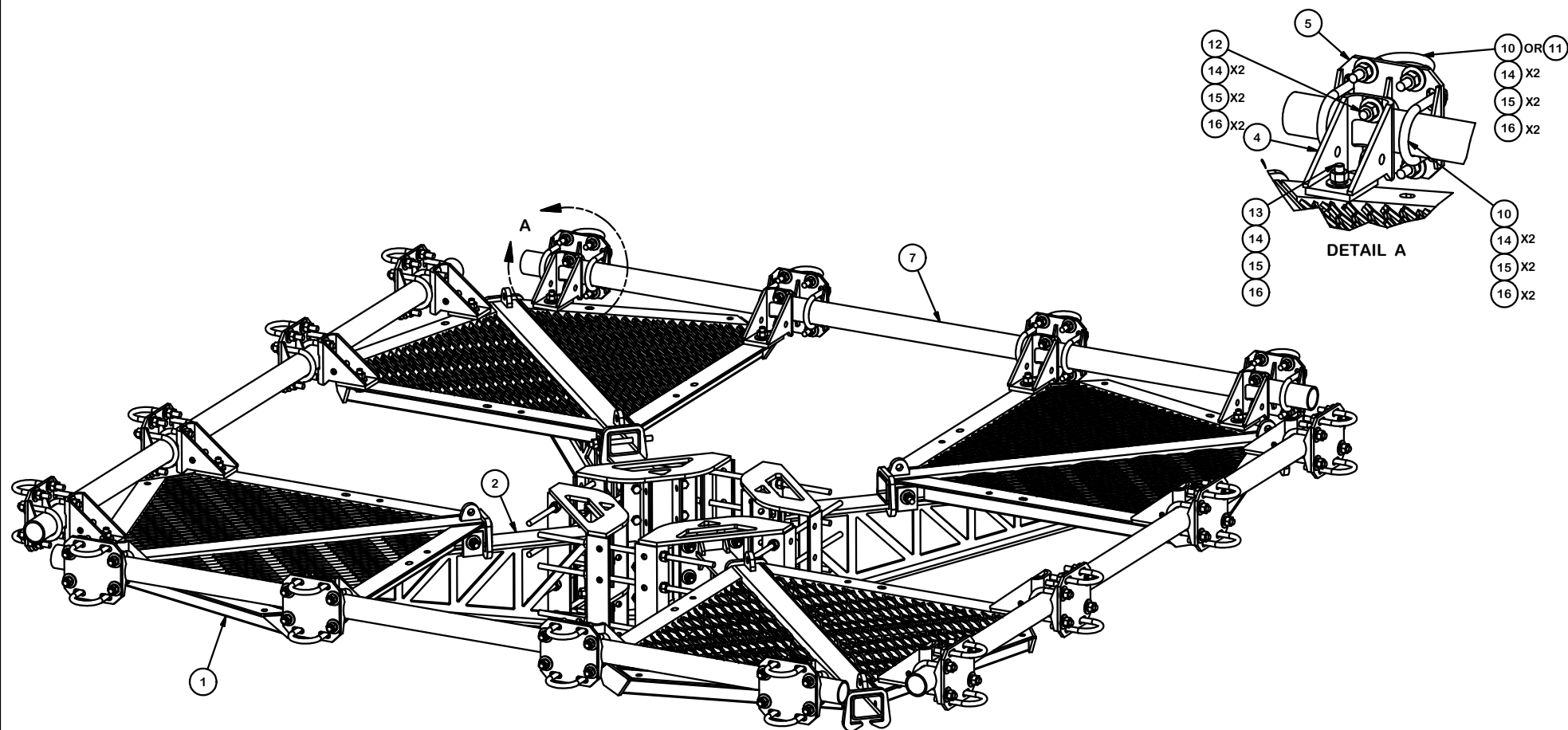


A valmont COMPANY

Engineering
 Support Team:
 1-888-753-7446

Locations:
 New York, NY
 Atlanta, GA
 Los Angeles, CA
 Plymouth, IN
 Salem, OR
 Dallas, TX

PART NO.	F4P-8
DWG. NO.	F4P-8



TOLERANCE NOTES

TOLERANCES ON DIMENSIONS, UNLESS OTHERWISE NOTED ARE:
 SAWED, SHEARED AND GAS CUT EDGES ($\pm 0.030"$)
 DRILLED AND GAS CUT HOLES ($\pm 0.030"$) - NO CONING OF HOLES
 LASER CUT EDGES AND HOLES ($\pm 0.010"$) - NO CONING OF HOLES
 BENDS ARE $\pm 1/2$ DEGREE
 ALL OTHER MACHINING ($\pm 0.030"$)
 ALL OTHER ASSEMBLY ($\pm 0.060"$)

PROPRIETARY NOTE:
 THE DATA AND TECHNIQUES CONTAINED IN THIS DRAWING ARE PROPRIETARY INFORMATION OF VALMONT INDUSTRIES AND CONSIDERED A TRADE SECRET. ANY USE OR DISCLOSURE WITHOUT THE CONSENT OF VALMONT INDUSTRIES IS STRICTLY PROHIBITED.

DESCRIPTION

8' FORTRESS™
 QUAD-PLATFORM MOUNT

CPD NO.	DRAWN BY	ENG. APPROVAL
81	CEK 8/10/2017	
SUB	DRAWING USAGE	CHECKED BY
02	CUSTOMER	BMC 8/30/2017

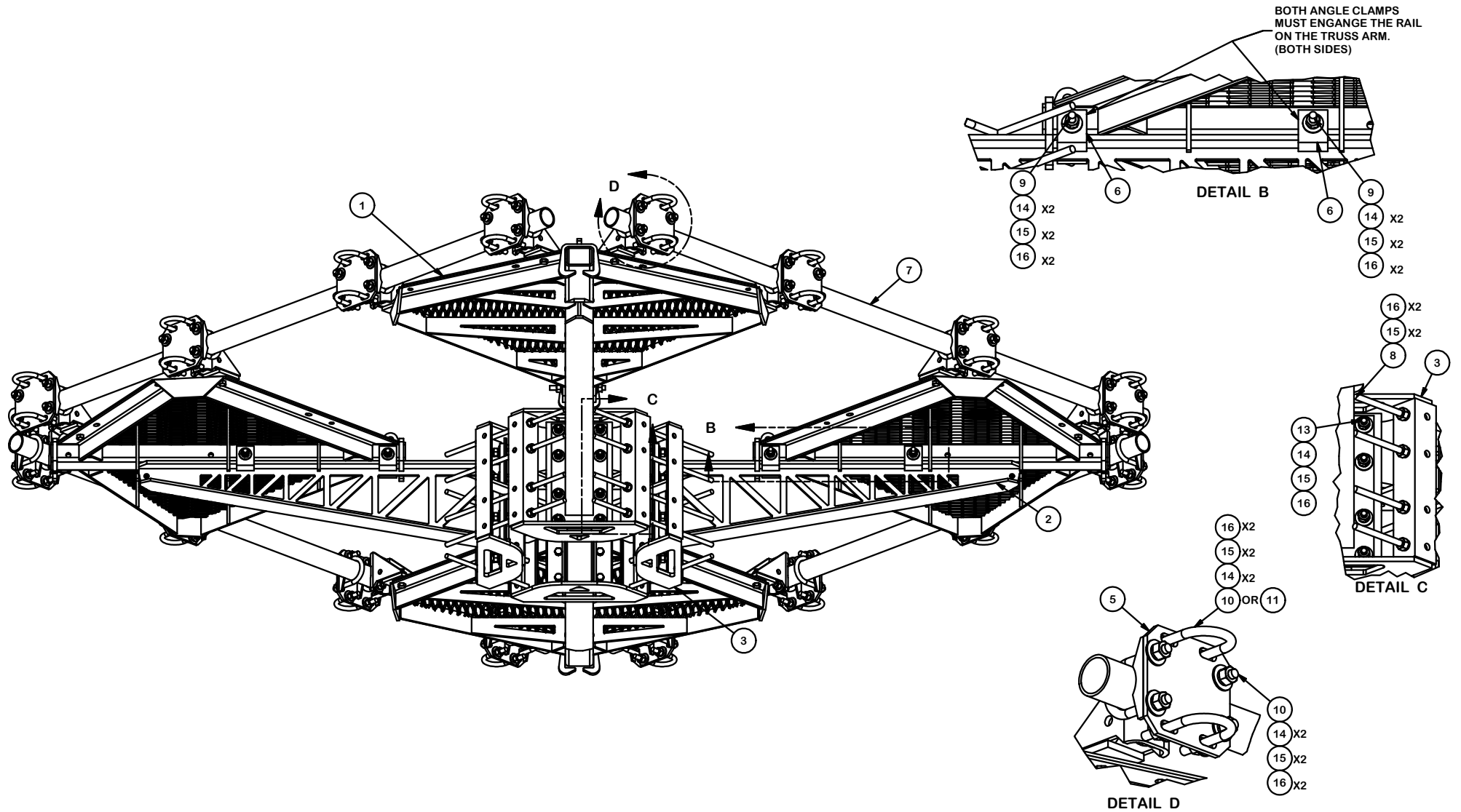


A valmont COMPANY

Engineering
 Support Team:
 1-888-753-7446

Locations:
 New York, NY
 Atlanta, GA
 Los Angeles, CA
 Plymouth, IN
 Salem, OR
 Dallas, TX

PART NO.	F4P-8	PAGE
DWG. NO.	F4P-8	3 OF 4



TOLERANCE NOTES

TOLERANCES ON DIMENSIONS, UNLESS OTHERWISE NOTED ARE:
 SAWED, SHEARED AND GAS CUT EDGES ($\pm 0.030"$)
 DRILLED AND GAS CUT HOLES ($\pm 0.030"$) - NO CONING OF HOLES
 LASER CUT EDGES AND HOLES ($\pm 0.010"$) - NO CONING OF HOLES
 BENDS ARE $\pm 1/2$ DEGREE
 ALL OTHER MACHINING ($\pm 0.030"$)
 ALL OTHER ASSEMBLY ($\pm 0.060"$)

PROPRIETARY NOTE:
 THE DATA AND TECHNIQUES CONTAINED IN THIS DRAWING ARE PROPRIETARY INFORMATION OF VALMONT INDUSTRIES AND CONSIDERED A TRADE SECRET. ANY USE OR DISCLOSURE WITHOUT THE CONSENT OF VALMONT INDUSTRIES IS STRICTLY PROHIBITED.

DESCRIPTION

8' FORTRESS™
 QUAD-PLATFORM MOUNT

CPD NO.	DRAWN BY	ENG. APPROVAL
CLASS	CEK 8/10/2017	
SUB	DRAWING USAGE	CHECKED BY
81	CUSTOMER	BMC 8/30/2017



Engineering
 Support Team:
 1-888-753-7446

Locations:
 New York, NY
 Atlanta, GA
 Los Angeles, CA
 Plymouth, IN
 Salem, OR
 Dallas, TX

PART NO.	F4P-8
DWG. NO.	F4P-8